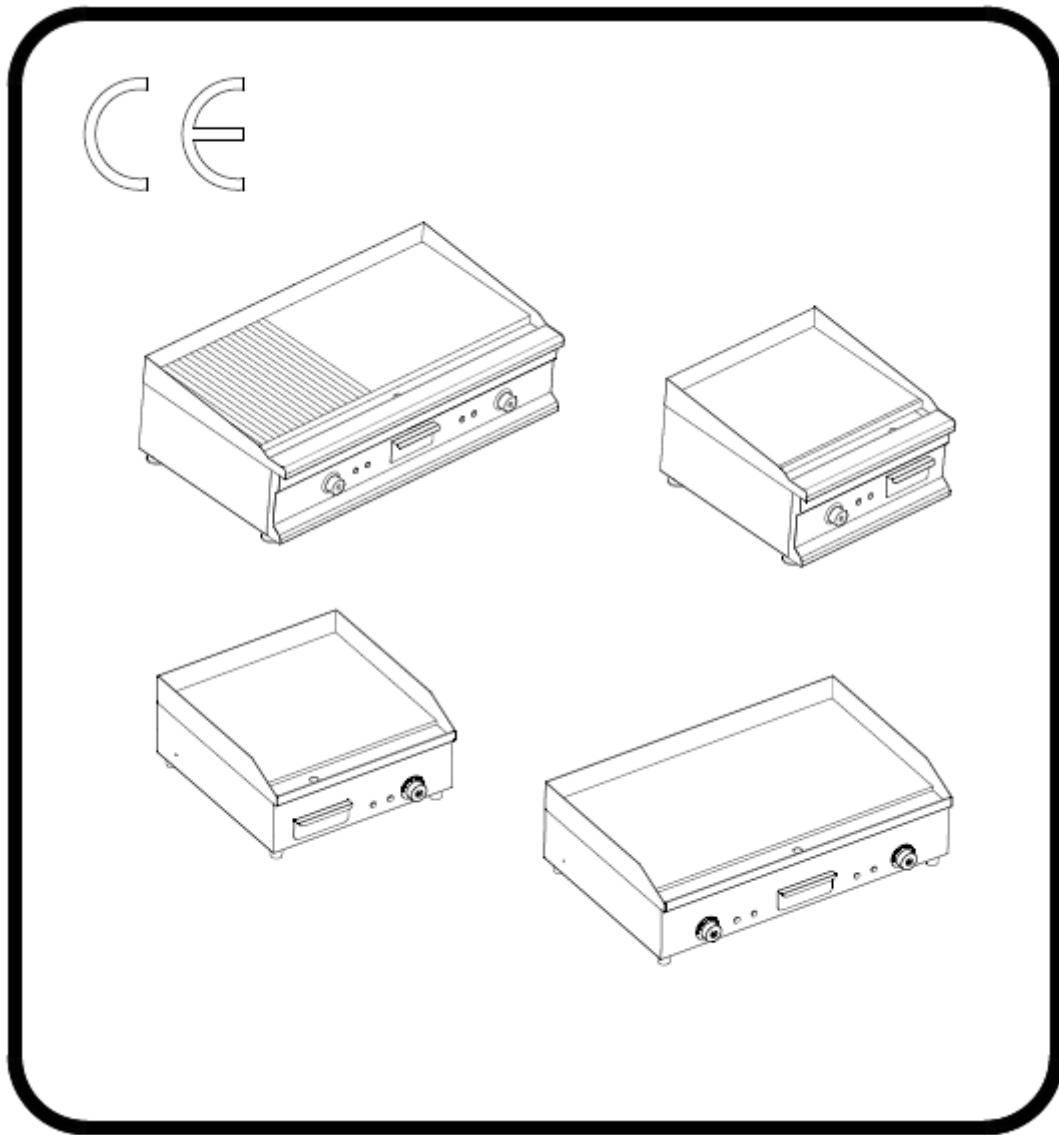


Adexa

Electric Griddle

Use Manual



Please read this use manual carefully before operating this equipment.

First of all, thank you very much for choosing our products.

The actual scope of supply may deviate from the description and description described herein if there is a special structure, additional specified options or due to changes in new technologies. If you have any questions, please contact the manufacturer.

In order to give full play to the performance of this product and reduce unnecessary losses and injuries, please read the operation guide carefully before starting any operation on the device, especially before starting the device!

The manufacturer is not liable for any damage or negligence caused by non-compliance with the operational guidelines.

This instruction should be placed directly on the device so that the operator can easily access it. Within the scope of improving performance characteristics and further development, we have the right to retain technical changes to our products.



Warning

1. Any modification, incorrect installation, adjustment, repairs or maintenance may result in property loss or casualties. If necessary, the modification or maintenance should be liaised with the supplier and carried out by trained professionals;
2. For your safety, please do not store or use inflammable and explosive gases, liquids or articles near this product;
3. The equipment shall not be used by persons with physical, perceptual or psychological disabilities or lack of experience or knowledge (including children), Unless someone supervises their safety or gives instructions on how to operate the device;
4. Please monitor children to ensure that they do not play with equipment.
5. Please be careful to store operating instructions. If the device is used by a third party, please submit the operating instructions to use. All users of the device must adhere to the operating instructions and safety guidelines.
6. Flammable and explosive gases, liquids or articles should not be stored or used near usage areas.
7. If appliances are located close to walls, partitions, kitchen equipment and trim panel, it is recommended that these equipment and facilities be made of non-combustible materials, otherwise they should be covered with appropriate non-combustible insulation materials, and pay close attention to fire protection regulations.

Catalog

I. Product Profile	4
II. Basic parameters.....	4
III. Symbols description	5
VI. Working principle	5
V. Notes	6
VI. Operating Instructions.....	6
VII. Routine check	7
VIII. Cleaning and maintenance.....	8
IX. Diagnosis of Common Fault	8
X. Packing List.....	9

I . Product Profile

WG series electric griddle adopt popular style design, body are made of high quality stainless steel, beautiful and elegant appearance. High quality electrical components are selected for energy saving and safety. With constant temperature function, easy to operate. WG series electric griddle has complete functions and excellent quality. It is the first choice for hotels, bars, Western restaurants, fast food restaurants and other places.

II . Basic parameters

Model	Specifications	Plate size (mm)	Using power supply	Rated input power (kW)	Dimension (mm)	Net weight (kg)
WG-360	All Flat	356x385	230V~50Hz	2	360x465x225	18
WG-360D	Mirror Surface	356x385	230V~50Hz	2	360x465x225	18
WG-500	All Flat	496x398	230V~50Hz	3	500x520x310	29
WG-500D	Mirror Surface	496x398	230V~50Hz	3	500x520x310	29
WG-600	All Flat	597x398	230V~50Hz	2.5+2.5	600x520x310	34
WG600-2	Half Flat Half Ribbed	597x398	230V~50Hz	2.5+2.5	600x520x310	34
WG-600D	Mirror Surface	597x398	230V~50Hz	2.5+2.5	600x520x310	34
WG-750	All Flat	747x398	230V~50Hz	3+3	750x520x310	40
WG750-2	Half Flat Half Ribbed	747x398	230V~50Hz	3+3	750x520x310	40
WG-750D	Mirror Surface	747x398	230V~50Hz	3+3	750x520x310	40
WG-1000	All Flat	997x398	230V~50Hz	3+3	1000x520x310	51
WG1000-2	Half Flat Half Ribbed	997x398	230V~50Hz	3+3	1000x520x310	51
WG-1000D	Mirror Surface	997x398	230V~50Hz	3+3	1000x520x310	51
WG-1200D	Mirror Surface	1197x398	230V~50Hz	3+3	1200x520x310	60
WG-350S	All Flat	346x385	230V~50Hz	2	350x465x225	18
WG-350SD	Mirror Surface	346x385	230V~50Hz	2	350x465x225	18
WG-360S	All Flat	356x385	230V~50Hz	2	360x465x225	19
WG-360SD	Mirror Surface	356x385	230V~50Hz	2	360x465x225	19
WG-500S	All Flat	497x398	230V~50Hz	3	500x490x230	27
WG-500SD	Mirror Surface	497x398	230V~50Hz	3	500x490x230	27
WG-600S	All Flat	597x398	230V~50Hz	2.5+2.5	600x490x230	31.5
WG600S-2	Half Flat Half Ribbed	597x398	230V~50Hz	2.5+2.5	600x490x230	31.5
WG-600SD	Mirror Surface	597x398	230V~50Hz	2.5+2.5	600x490x230	31.5

WG-750S	All Flat	747x398	230V~50Hz	2.5+2.5	750x490x230	38
WG750S-2	Half Flat Half Ribbed	747x398	230V~50Hz	2.5+2.5	750x490x230	38
WG-750SD	Mirror Surface	747x398	230V~50Hz	2.5+2.5	750x490x230	38
WG-1000S	All Flat	997x398	230V~50Hz	3+3	1000x490x230	49
WG1000S-2	Half Flat Half Ribbed	997x398	230V~50Hz	3+3	1000x490x230	49
WG-1000SD	Mirror Surface	997x398	230V~50Hz	3+3	1000x490x230	49
WG-1200S	Mirror Surface	1197x398	230V~50Hz	3+3	1200x490x230	59

III. Symbols description

In this manual, symbols are used to highlight all important safety instructions and suggestions related to the equipment. In order to avoid accident danger, casualties or property loss, please pay special attention to these instructions.



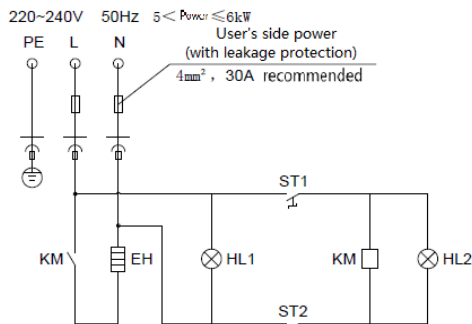
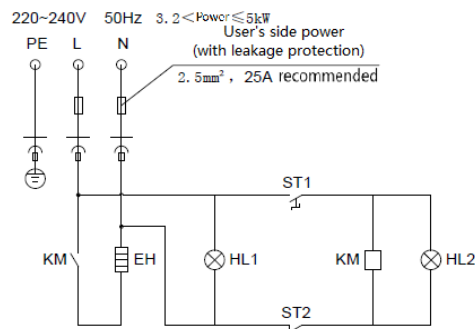
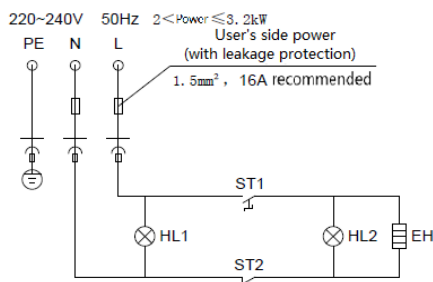
Equipotential



Ground wire

VI. Working principle

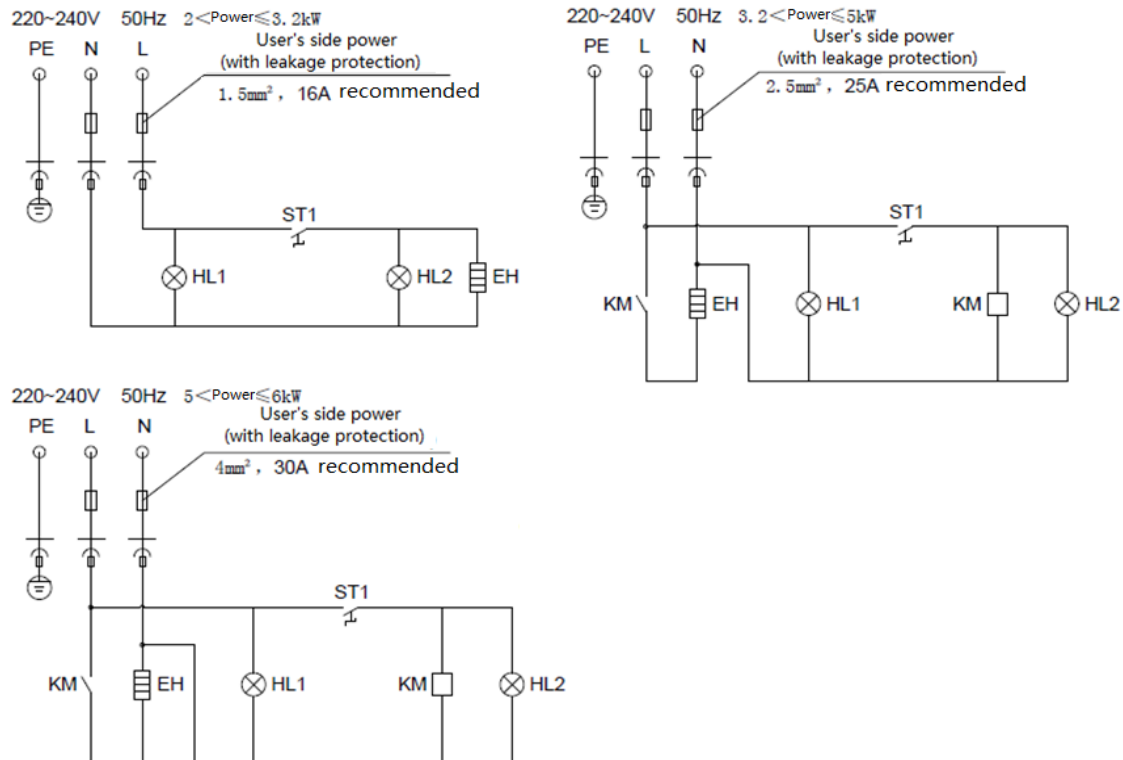
1、WG-360/WG-500/WG-600/WG-750/WG-1000



ST1: Temperature Controller ST2: Temperature Limiter HL1: Power Indicator
HL2: Heating Indicator EH: Electric Heating Pipe KM: Relay



2、WG-350S/WG-360S/WG-500S/WG-600S/WG-750S/WG-1000S



ST1: Temperature Controller HL1: Power Indicator HL2: Heating Indicator
 EH: Electric Heating Pipe KM: Relay

V. Notes

1. This manual is not applicable to people with physical, sensory and intellectual defects or lack of experience and knowledge.
2. It is strictly prohibited to place inflammable and explosive materials around the machine , and good ventilation environment shall be maintained.
3. When using the electric griddle, the non staff shall not be near the electric griddle, and children shall not touch the heating plate to avoid scalding.
4. When the electric griddle is not in use, unplug the power plug or cut off the power switch to avoid accidents.
5. All maintenance work must be carried out after the power supply is cut off.
6. If the electric griddle breaks down, including the damage of the power cord, do not dismantle it by yourself. Please send it to our special maintenance department or dealer for repair.

VI. Operating Instructions

Before use, check whether the voltage of the power supply matches the nameplate, and whether the power switch and fuse meets the power requirement of the machine. The housing must be grounded reliably.

Operating steps:

1. Place the machine firmly, place the temperature controller at the zero position, turn on the power, and then the green power indicator lights up. Adjust the knob of the temperature controller to the required working temperature, and then the orange working indicator lights up, and the heating pipe starts to be electrified and heated. After the test, the user can readjust the knob of the temperature controller to determine the temperature suitable for his own manufacturing process.
2. When the temperature reaches the set value, the orange heating indicator will be off, and the electric griddle will automatically enter the constant temperature state, at this time, the physical production can be started. When the temperature of the griddle plate surface drops slightly, the electric griddle furnace will automatically enter the heating state to ensure that the temperature of the griddle plate surface is within the set temperature range.
3. Electric griddle with two temperature controllers, the left temperature controller controls the heating of the left half of griddle panel, and the right temperature controller controls the heating of the right half of grill panel. Users can use all or part of it according to their needs.
4. After the food is cooked, take it out with wooden clip or bamboo clip. Avoid using metal sharp tools to roll or take out food and scratch the surface of griddle board.
5. After the operation, turn the temperature controller clockwise to the zero position limit position, and cut off the power supply to ensure safety.

VII. Routine check

1. Daily examination must be carried out regularly.
2. Regular inspection of products can prevent serious accidents.
3. Stop using when circuit and machine failures are detected.
4. Be careful to check the state of the machine before and after daily use.

Before use	Does the machine tilt? Is the control panel damaged? Is there any aging, cracking or breakage in the power cord?
In use	Are there any odors, odors, or vibrations? Is the temperature out of control or leakage?

VIII. Cleaning and maintenance

1. Before cleaning, cut off the power supply to prevent accidents.
2. After the completion of work every day, clean with wet cloth in time, and wipe with neutral detergent if necessary. At the same time, it is forbidden to wash the electric griddle directly with water to avoid damaging electrical components and causing personal safety accidents.
3. The residual oil in the oil receiving box at the lower part of the machine shall be removed frequently.
4. If it is not used at any time, turn off the thermostat and power switch.
5. When it is not used for a long time, the stove shall be cleaned and placed in a well ventilated warehouse without corrosive gas.

IX. Diagnosis of Common Fault

Fault	Cause Analysis	Solution
Turn on the power supply and the power indicator will not turn on or temperature doesn't rise.	1、The power supply is abnormal and the power supply is not connected. 2、Fusing of metal	1、Check power supply and connection line to make power supply normal 2、Fuse Replacement
Turn on the power supply, rotate the thermostat, and the heating indicator is on, but not heat up.	1、Heat pipe has been burnt out.	1、Replace the burnt heat pipe
Turn on the power supply, rotate the thermostat, the heating indicator is not on, but the temperature is rising.	1、Heating indicator damaged	1、Replace the heating indicator
Turn on the power supply, rotate the thermostat, the heating indicator is not on, but not heat up.	1、Temperature Controller Damage 2、Disconnection or damage of thermostat	1、Replace the temperature controller 2、Check whether the temperature limiter pops out the black cylinder, and reset it if it pops out; replace the temperature limiter if it doesn't

The fault types listed above are for reference only. If a failure occurs, you should immediately stop using the device and inform professional maintenance personnel for repairs or contact the supplier as soon as possible.

X. Packing List


Model \ QTY. Name	Griddle	Oil box	Foot	Use Manual	Qualified Certificate
WG-360	1	1	4	1	1
WG-360D	1	1	4	1	1
WG-500	1	1	4	1	1
WG-500D	1	1	4	1	1
WG-600	1	1	4	1	1
WG600-2	1	1	4	1	1
WG-600D	1	1	4	1	1
WG-750	1	1	4	1	1
WG750-2	1	1	4	1	1
WG-750D	1	1	4	1	1
WG-1000	1	1	4	1	1
WG1000-2	1	1	4	1	1
WG-1000D	1	1	4	1	1
WG-350S	1	1	4	1	1
WG-350SD	1	1	4	1	1
WG-360S	1	1	4	1	1
WG-360SD	1	1	4	1	1
WG-500S	1	1	4	1	1
WG-500SD	1	1	4	1	1
WG-600S	1	1	4	1	1
WG600S-2	1	1	4	1	1
WG-600SD	1	1	4	1	1
WG-750S	1	1	4	1	1
WG750S-2	1	1	4	1	1
WG-750SD	1	1	4	1	1
WG-1000S	1	1	4	1	1
WG1000S-2	1	1	4	1	1
WG-1000SD	1	1	4	1	1

DECLARATION OF CONFORMITY

Equipment Type	Model Number
Electric Griddles	WG1000S, WG1000SD.

Application of Territory Legislation & Council Directives(s)	
<p>This Declaration of Conformity is issued under the sole responsibility of the importer: Adexa Direct Limited. For the object of this declaration, the essential requirements and principal safety objectives have been demonstrated.</p> <p>The object of this declaration conforms to the following statutory requirements and Union harmonisation legislation, and complies with the following harmonised standards:</p> <p>1. Low Voltage Directive 2014/35/EU The Electrical Equipment (Safety) Regulations 2016 EN 60335-1:2012 + A11:2014 + A13:2017 + A1:2019 + A14:2019 + A2:2019 + A15:2021 + A16:2023, EN 60335-2-38:2003 + A1:2008, EN 62233:2008</p> <p>2. Electro-Magnetic Compatibility (EMC) Directive 2014/30/EU Electromagnetic Compatibility Regulations 2016 EN IEC 55014-1:2021, EN IEC 55014-2:2021, EN IEC 61000-3-2:2019 + A1:2021, EN 61000-3-3:2013 + A2:2021</p> <p>3. Restriction of Hazardous Substances Directive (RoHS) 2015/863 amending Annex II to Directive 2011/65/EU Restriction of the Use of Certain Hazardous Substances in Electrical and Electronic Equipment Regulations 2012 IEC 62321-3-1:2013, IEC 62321-5:2013, IEC 62321-4:2013, IEC 62321-7-1:2015, IEC 62321-7-2: 2017, IEC 62321-6:2015, IEC 62321-8:2017</p>	
Imported By	Adexa Direct Limited
Brand	Adexa
Year of Manufacture	2024

I, the undersigned, hereby declare that the equipment specified above conforms to the above Territory Legislation, Directive(s) and Standard(s).

Date	22.NOV.2024
Signature	
Full Name	Hakan Baykal
Position	Purchase Manager

